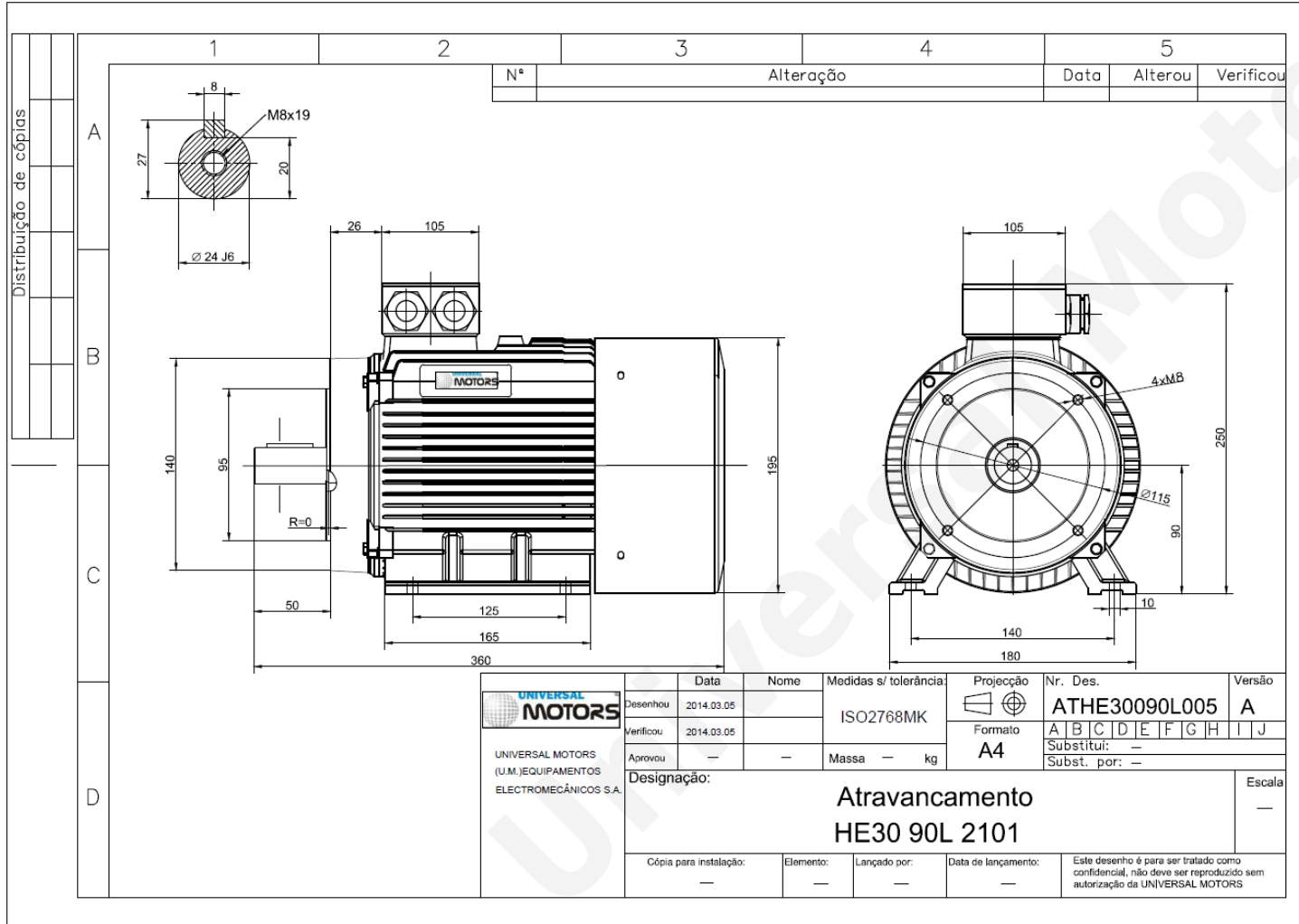


TECHNICAL DATA

Three Phase Electric Motors - Cast Iron Frame
 HE30 90 L1 2 IE2
 2.2 kW / 3 Cv
 2880 RPM



Motor type:	HE30 90 L1 2 IE2
Output:	2.2 kW / 3 Cv
Speed (min ⁻¹):	2880 RPM
Frequency:	50 Hz
Voltage:	400 V
Current:	4.5 A
Power factor (Cos Ø):	0.85
Poles:	2
Insulation class:	F
Temperature rise Class:	B
Efficiency 50%:	82.5 %
Efficiency 75%:	84.0 %
Efficiency 100%:	83.2 %
Torque:	7.3 N.m
Tstarting/Tnominal:	2.3
Istarting/Inominal:	7.8
Tmaximum/Tnominal:	2.3
Noise:	61 Db(A)
Weight:	30 Kg
Bearing DE:	6205 2Z C3
Bearing NDE:	6205 2Z C3

Regime - S1

Altitude - 1000m

Environment Temperature - 40°C

CONTACTS:

UNIVERSAL MOTORS Tel: +351 252 299 080
 Rua de São Brás,745 Fax: +351 252 299 089
 4480-782 VILA DO CONDE Mail: geral@universalmotors.pt

* References applied only in the UK